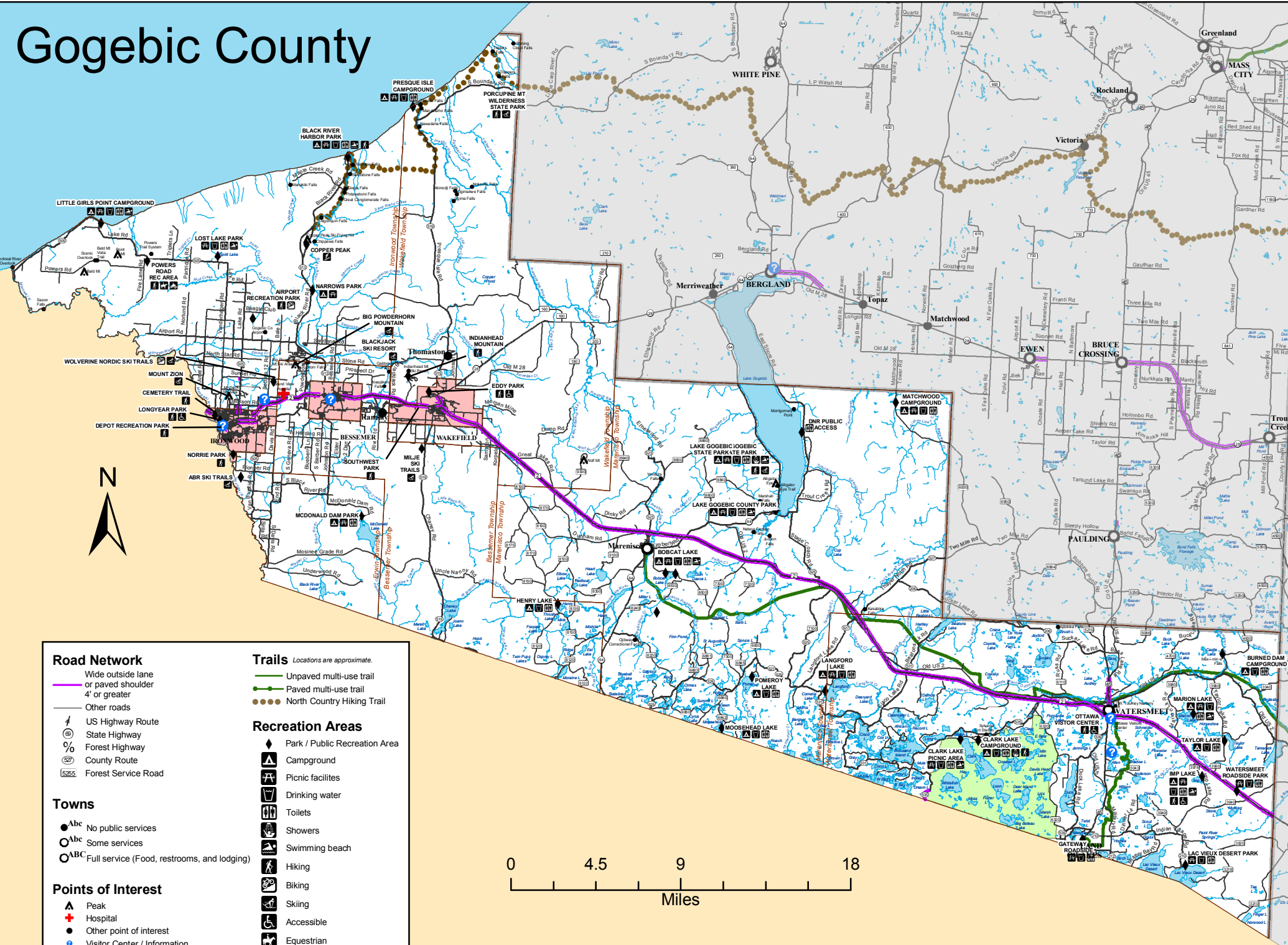


Gogebic County



Road Network

- Wide outside lane or paved shoulder 4' or greater
- Other roads
- US Highway Route
- State Highway
- Forest Highway
- County Route
- Forest Service Road

Towns

- abc No public services
- abc Some services
- ABC Full service (Food, restrooms, and lodging)

Points of Interest

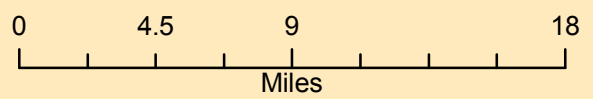
- Peak
- Hospital
- Other point of interest
- Visitor Center / Information

Trails

- Unpaved multi-use trail
- Paved multi-use trail
- North Country Hiking Trail

Recreation Areas

- Park / Public Recreation Area
- Campground
- Picnic facilities
- Drinking water
- Toilets
- Showers
- Swimming beach
- Hiking
- Biking
- Skiing
- Accessible
- Equestrian



Gogebic County Trail List

| Trail Name | Length (approximate, if known)* | Type** |
|---|---------------------------------|---|
| ABR Ski Trails | 60 km/37 mi (network) | Skiing (skate/classic/skijoring), Snowshoeing (separate & overlapping trails) |
| Airport Recreation Park | | Walking, Biking |
| Big Powderhorn Mountain | 32 km/20 mi (network) | Skiing (groomed) |
| Blackjack Ski Resort | 30 km/19 mi (network) | Skiing (groomed) |
| Black River Harbor National Recreation Area | | |
| Conglomerate Falls | 0.8 mi | Hiking |
| Gorge & Potawatomi Falls | | Hiking |
| Rainbow Falls | 0.5 mi | Hiking |
| Sandstone Falls | 0.3 mi | Hiking |
| North Country Trail | 11.8 mi | Hiking |
| City of Ironwood | | |
| Cemetery Trail | 1 mi | Hiking |
| Depot Recreation Park | | Non-Motorized |
| Longyear Park | | Non-Motorized |
| Norrie Park | | Walking |
| Miners Memorial Heritage Park | | Non-Motorized |
| City of Wakefield | | |
| Eddy Park | | Non-Motorized |
| Southwest Park | | Non-Motorized |
| Indianhead Mountain | | Hiking |
| Imp Lake Trail | 1.5 mi | Hiking (0.80 miles accessible) |
| Lake Gogebic State Park Forest Trail | 3.2 km/2 mi | Hiking, Skiing (ungroomed) |
| Milje's Ski Trails | 15 km/9.3 mi (network) | Skiing (groomed) |
| Mount Zion | 4 km/2.5 mi | Skiing (groomed) |
| Ottawa Visitor Center Nature Trail | 0.3 mi | Hiking |
| Porcupine Mountains State Park | 32 km/20 mi (roughly, network) | Hiking, Skiing (ungroomed in Gogebic County), Snowshoeing (separate & overlapping trails) |
| Powers Road Recreation Area | 40 km/25 mi (network) | Multi-Use |
| Sylvania Wilderness | | |
| Clark Lake Lakeshore Hiking Trail | 8 mi | Hiking |
| Unmarked trails throughout | 26 mi (primitive network) | Hiking |
| Wolverine Nordic Ski Trails | 24.9 km/15.5 mi (network) | Biking, Skiing (groomed), Snowshoeing (separate trail) |

* Ski trail lengths are given in kilometers as well as miles.

** Activities include but are not necessarily limited to those indicated.

Created July 2013 by Western Upper Peninsula Planning and Development Region

Accuracy is not guaranteed. <http://www.getaroundwup.org> <http://www.wuppdr.org>

