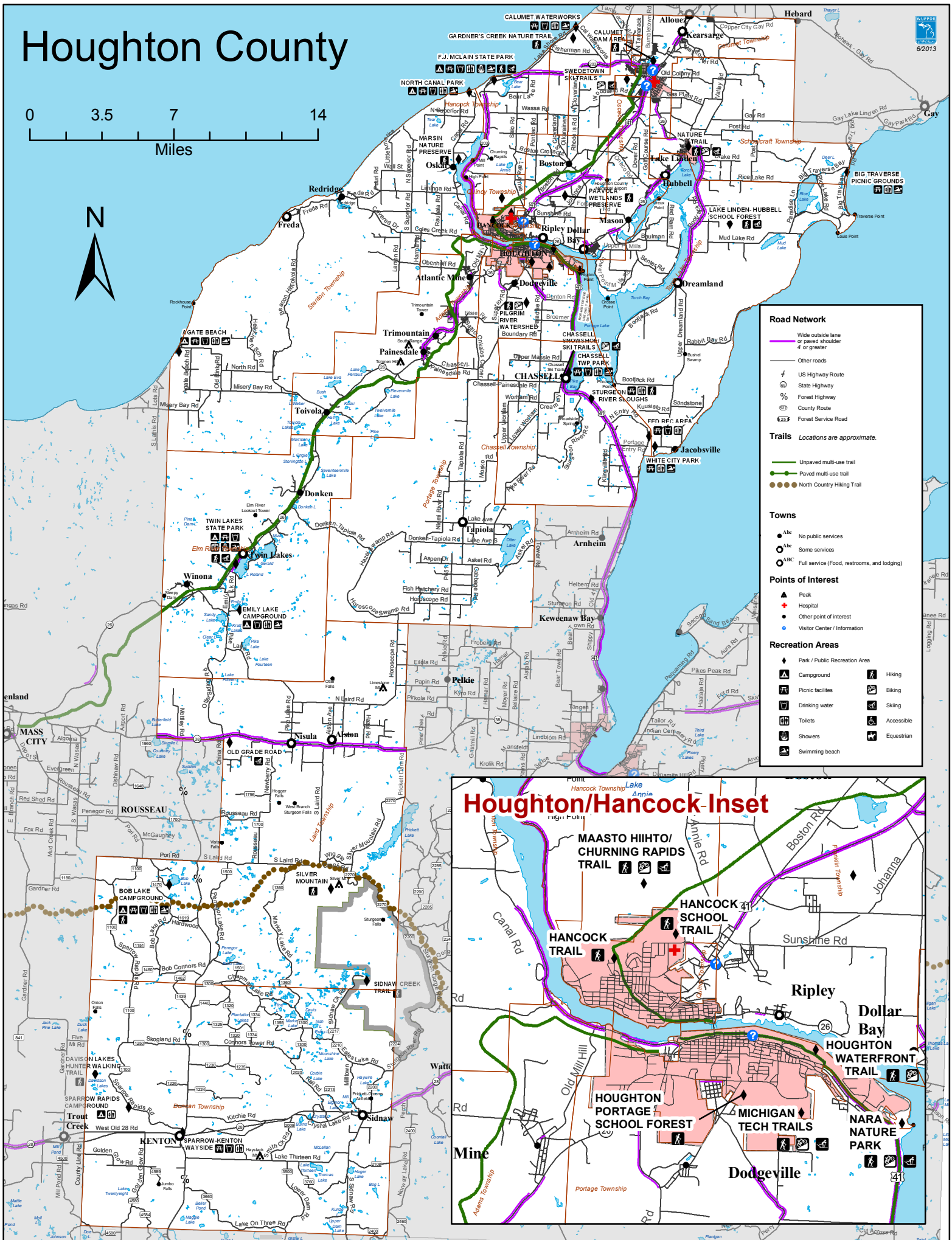
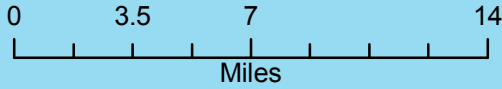


Houghton County



Road Network

- Wide outside lane or paved shoulder 4' or greater
- Other roads
- US Highway Route
- State Highway
- Forest Highway
- County Route
- Forest Service Road

Trails Locations are approximate.

- Unpaved multi-use trail
- Paved multi-use trail
- North Country Hiking Trail

Towns

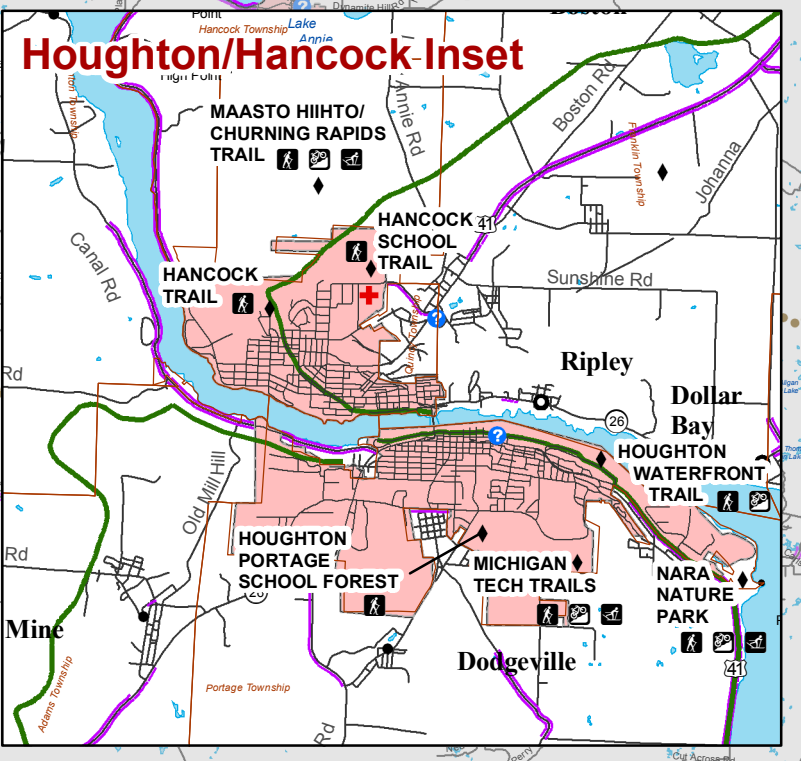
- No public services
- Some services
- Full service (Food, restrooms, and lodging)

Points of Interest

- Peak
- Hospital
- Other point of interest
- Visitor Center / Information

Recreation Areas

- Park / Public Recreation Area
- Campground
- Picnic facilities
- Drinking water
- Toilets
- Showers
- Swimming beach
- Hiking
- Biking
- Skiing
- Accessible
- Equestrian



Houghton County Trail List

Trail Name	Length (approximate if known)	Type**
Sturgeon River Slough (deVriendt) Nature Trail	1.5 mi	Hiking
Bob Lake Forest Campground		
Beaver Lodge Trail	1.3mi	Hiking
North Country Trail		Hiking
Calumet Dam Area		Walking
Chassell Ski/Snowshoe Trails	4 km/2.5mi and 8 km/5 mi (loops)	Biking, Skiing (groomed and partially lighted), Snowshoeing
Davison Lakes Hunter Walking Trail	8.5 mi	Hiking
Gardner's Creek Nature Trail	1 mi	Hiking
Hancock Middle/High School Nature Trail		Walking
Hancock Trail		Summer Multi-Use, Winter Snowmobiling
Houghton/Portage Township School Forest Trail		Walking
Houghton Waterfront Trail	4.5 mi	Summer Non-Motorized, Winter Snowmobiling
Lake Linden/Hubbell School Forest Trail		Hiking, Skiing (groomed)
Lake Linden Nature Trail	2.5 mi	Non-Motorized
Maasto Hiihto/Churning Rapids Trail	12 m (network)	Non-Motorized
McLain State Park	6.4 km/4 mi (loop)	Hiking, Skiing (groomed), Snowshoeing
Marsin Nature Preserve	0.8mi	Walking
Michigan Tech Trails	35 km/22 mi (network)	Hiking, Biking, Skiing (groomed and partially lighted), Skiing, Snowshoeing (separate & overlapping trails)
Nara Nature Park		
Main Trail System	249+ mi (network)	Non-Motorized
Nara Nature Trail	0.9mi	Walking
Peepsock Trail	0.8mi	Hiking
Old Grade Road Ski Trail	4.2 and 1.5 (loop)	Skiing (groomed)
Paavola Wetlands Preserve	2.6 mi	Hiking
Pilgrim River Watershed Project	6+ mi	Hiking, Biking
Silver Mountain		Hiking
Sturgeon River Gorge Wilderness		
Bears Den Overlook	0.2mi	Hiking
North Country Trail	8 mi	Hiking
Pine Bluff Trail	1.5 mi	Hiking
Sidnaw Creek Trail	7.5 mi	Hiking
Sturgeon Falls Trail	1 m	Hiking
Swedetown Ski Trails	42 km/26 mi (network)	Biking Skiing, Snowshoeing (each separate)
Twin Lakes State Park Nature Trail	2.5 km/1.5 mi	Hiking, Skiing (ungroomed)

* Ski trail lengths are given in kilometers as well as miles.

** Activities include but are not necessarily limited to those indicated.

Created June 2013 by Western Upper Peninsula Planning and Development Region

Accuracy is not guaranteed. <http://www.getaroundwup.org> <http://www.wupppdr.org>