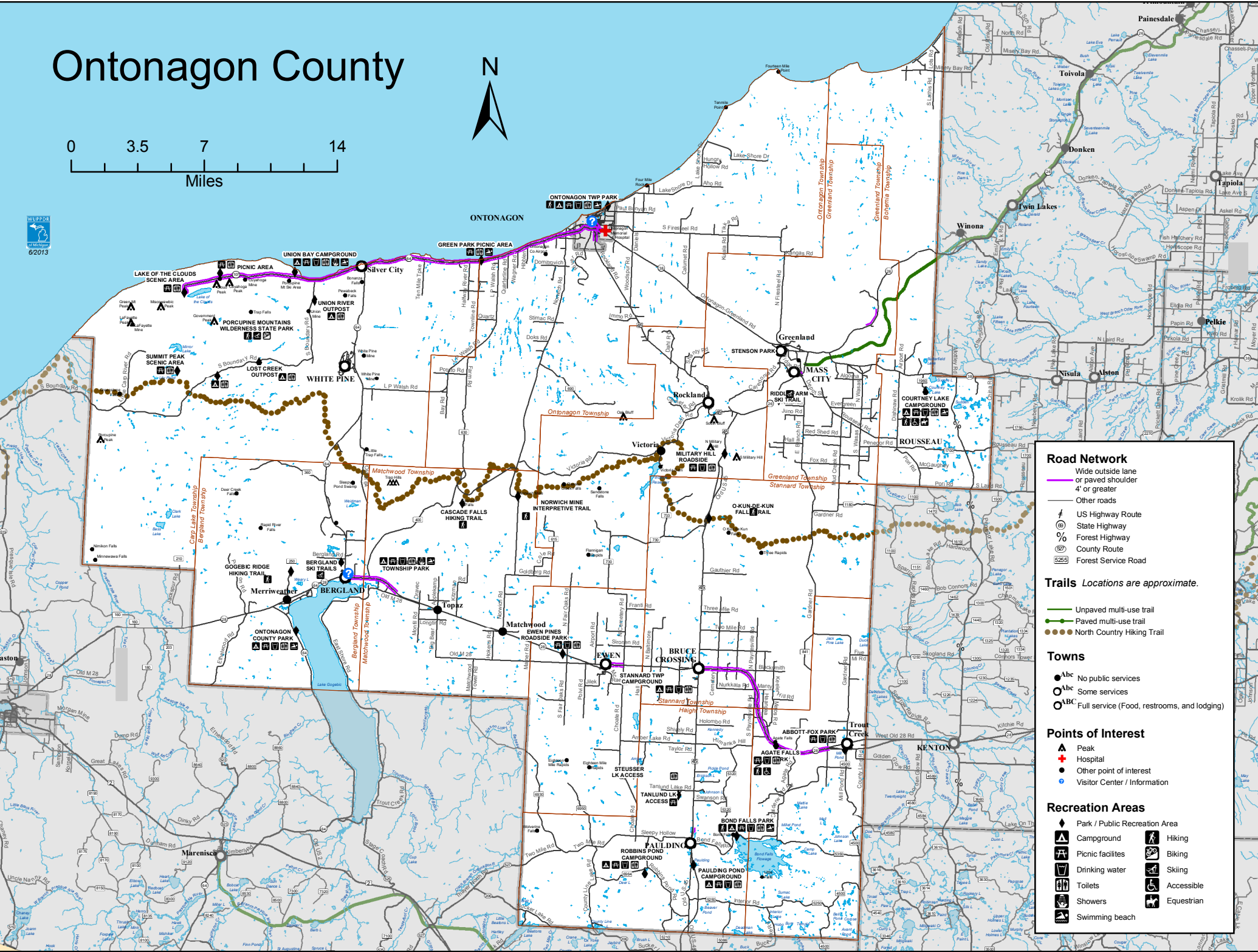


Ontonagon County



Road Network

- Wide outside lane or paved shoulder 4' or greater
- Other roads
- US Highway Route
- State Highway
- Forest Highway
- County Route
- Forest Service Road

Trails Locations are approximate.

- Unpaved multi-use trail
- Paved multi-use trail
- North Country Hiking Trail

Towns

- abc No public services
- o Some services
- ABC Full service (Food, restrooms, and lodging)

Points of Interest

- ▲ Peak
- ⊕ Hospital
- Other point of interest
- ⦿ Visitor Center / Information

Recreation Areas

- ◆ Park / Public Recreation Area
- ⛺ Campground
- ⛶ Picnic facilities
- 🚰 Drinking water
- 🚻 Toilets
- 🚿 Showers
- 🏊 Swimming beach
- 🥾 Hiking
- 🚲 Biking
- 🎿 Skiing
- ♿ Accessible
- 🐎 Equestrian

Ontonagon County Trail List

Trail Name	Length (approximate, if known)*	Type**
Bergland Ski Trails	5.1 km/3.2 mi and 5.5 km/3.4 mi (loops)	Skiing (ungroomed)
Bond Falls Trail	0.5 mi (loop)	Walking
Cascade Falls Hiking Trail	1 mi (2 routes)	Hiking
Courtney Lake National Forest Campground		
Circle of Life Interpretive Trail	2.2 mi (accessible)	Hiking
Courtney Lake/Old Grade Road Ski Trail	6.8 km/4.2 mi and 2.4 km/1.5 mi (loops)	Skiing (groomed)
Gogebic Ridge Hiking Trail	8 mi and 0.5 (loop) mi	Hiking
Norwich Mine Interpretive Trail	1.2 mi	Hiking
Ontonagon Township Park Hiking (Nature) Trail	1 mi	Hiking
O-Kun-De-Kun Falls Trail	1.3 mi (segment of North Country Trail)	Hiking
Porcupine Mountains Wilderness State Park	145 km/90 mi (roughly, network)	Hiking, Biking, Skiing (some groomed), Snowshoeing (separate & overlapping trails)
Riddle Farm Ski Trails	3.1 mi (4 loops)	Skiing (groomed)

* Ski trail lengths are given in kilometers as well as miles.

** Activities include but are not necessarily limited to those indicated.

Created July 2013 by Western Upper Peninsula Planning and Development Region

Accuracy is not guaranteed. <http://www.getaroundwup.org> <http://www.wuppdr.org>

